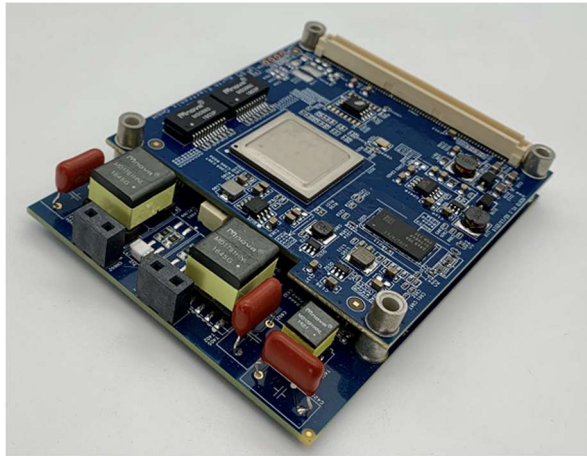


XDSL-871:twisted pair modem,Copper wire transmission modem,200M vdsl2 ,vdsI2 bonding Module

XDSL-871 using the very powerful Broadcom xDSL chipset processing engine is a 1Ghz dual-core ARM cortex A9,with 32KB I/D cache,and 512KB L2 cache. It is compatible with ADSL/ADSL2+/VDSL/VDSL2/G.fast high-performance xDSL module for industrial application.

- VDSL2 Full profile 8a/12a/17a/30a/35B Module
- Compatible with ADSL/ADSL2+/VDSL/VDSL2
- Support bonding,Support G.fast
- 2 LAN-Port 10/100/1000 Mbps
- 1RS232 Interface(CLI Interface, TTL level)
- Low power consumption. Less than 6W on full loading
- Multiple I / O interfaces
- Temperature Range:-40°C to 70°C



Applications

- High-end xDSL tester
- VDSL2 router/HGU/IAD
- Industrial/Embeded Computer



Item		XDSL-871	XDSL-872
VDSL2 profile	8a, 8b, 8c, 8d, 12a, 12b	Yes	Yes
	17a	Yes	Yes
	30a	Yes	Yes
	35B	Yes	Yes
	G.Fast(106MHz)	Yes	Yes
Annex B/J		No	A/M+B/J in one
G.Vector		Yes	Yes
G.INP		Yes	Yes
G.Bonding		Yes	No
LAN		Gigabit Ethernet	Gigabit Ethernet
Power consumer		5.0	4.2

DSL standards	ADSL over POTS with Annex A and Annex B ITU G. 992.1 (ADSL), G.992.3 (ADSL2), and G.992.5(ADSL2+) ADSL over POTS with Annex M (extended upstream bandwidth) G.992.3 (ADSL2) and G.992.5 (ADSL2+) ADSL2+:Max24Mbps(downstream)max1Mbps(upstream) VDSL2
Line Speed	(G.993.2) 35B(G.993.2) G.fast(G.9701): Max 1000Mbps(downstream,upstream)
DSL line length	Max 5.5km

IP and Network Features

Operating Modes Bridge/PPPoE/PPPoA/DHCP/IPoA/IPoE

Ports and Connectors

DSL	2 DSL ,2 RJ45
Serial Ports	RS232 interface (CLI Interface, TTL level);
LAN	2 10/100/1000Mbps,MDI/MDI-X

Power Supply	DC/12V input, max 6W
--------------	----------------------

Mechanical Data

Size	102x76.5x15(LxWxH) mm
Weight	120g
Environmental Conditions	-40 to 70°C(Operation)5 to 95%(not condensing)

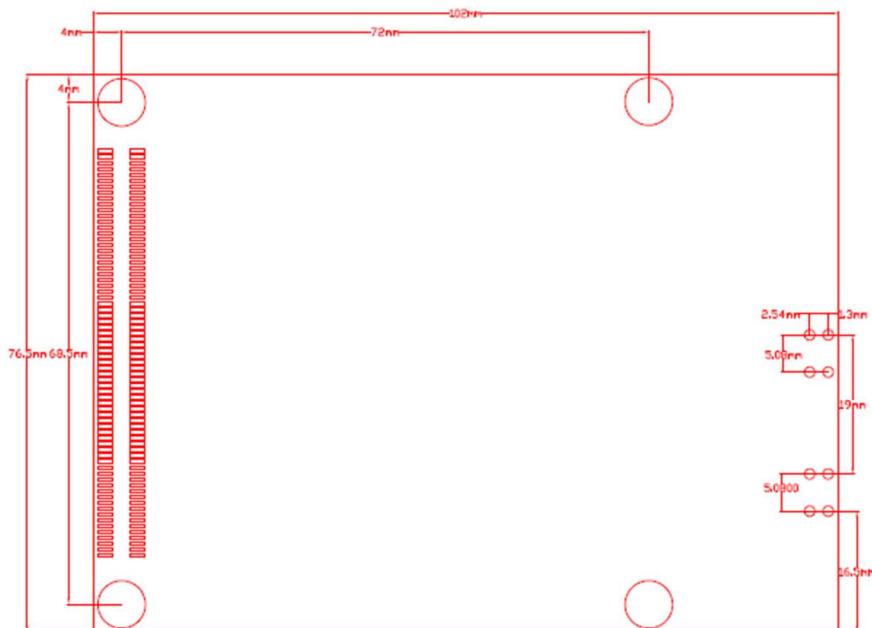
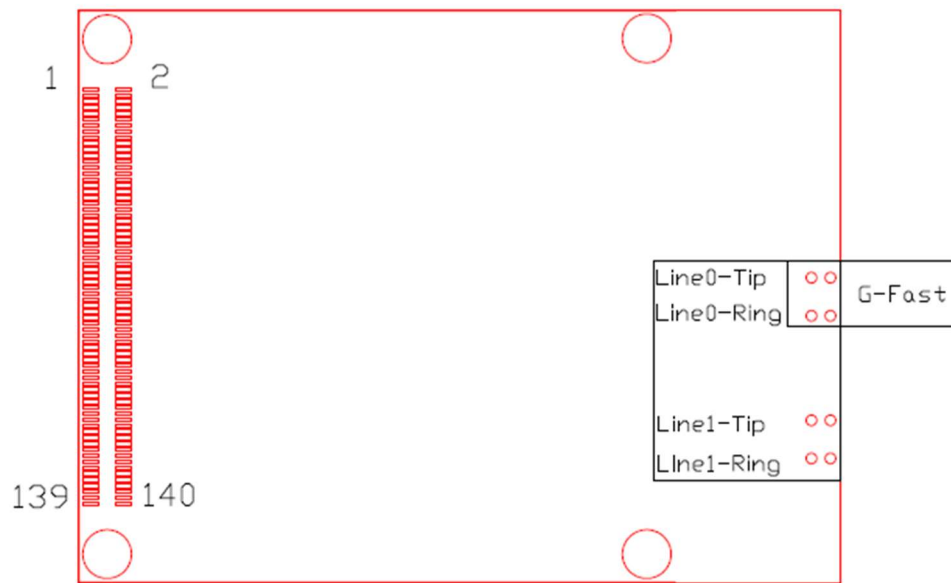


Compatible with ADSL2+/17a VDSL2
 Support VDSL2 30a/35b/G.fast(106MHz)
 Bond xDSL(up to 30a)or annex A+B one board

Configuration and Management

Configuration Web-based(HTTP) CLI(Command Line Interface) Telnet
 Indicators 3LEDS

Mechanical Structure



Order Information

Product Description
dustinal VDSL2/ADSL2 Module

Order Code
XDSL-871